



www.opgal.com

EyeCGas[®] Utility

PC Software Application for EyeCGas Camera

User Manual

Table of Contents

Table of Contents.....	1
Changes and Revisions.....	5
EyeCGas [®] Utility Software "	6
1.1 Software Installation	6
Connecting the EyeCGas [®] to the PC	6

EyeCGas® Utility Software

Transfer/Delete Files	7
1.2 Transfer Files from Camera to PC	7
1.3 Directory	9
1.4 Delete Data from Camera	10
Settings Menu.....	12
1.5 Setting date and time	12
1.6 Set cooler off	13
1.7 System Versions	14

List of Figures

Figure1 : Searching for Camera	6
Figure2 : ArtSoft is Running Warning	7
Figure3 : Home Screen	7
Figure4 : Select save location	8
Figure5 : Missing Write Permission window	8
Figure6 : Low disk space notification	9
Figure7 : Download completed	9
Figure8 : Delete all data of camera	11
Figure9 : Confirm Camera Data Deletion	11

EyeCGas® Utility Software

NOTICE

The content of this user's manual is proprietary to Opgal Optronic Industries Ltd. Reproduction in whole or in part of this manual is prohibited without the express written consent of Opgal Optronic Industries Ltd.

Opgal Optronic Industries Ltd. operates under a continual product improvement program and reserves the right to make improvements and or changes without prior notification. This manual supersedes all previous manuals for this instrument.

EyeCGas® is an Opgal Optronic Industries Ltd. registered trademark.

© COPYRIGHT 2016 Opgal Optronic Industries Ltd. All rights reserved.

EyeCGas® Utility Software

Changes and Revisions

Revision	Description	Reference	Date	Approved by
A	Revision of EyeCGas® Utility Software Installation Manual		13/9/16	Zohar Cohen
B	Settings menu added		01/01/17	Zohar Cohen

EyeCGas® Utility Software "

EyeCGas® is a PC software tool for users of EyeCGas® camera.

The software allows downloading and deleting data from the EyeCGas® camera and performing several routine maintenance operations.

EyeCGas® utility replaces most of the functions of the older "ArtSoft" software and is designed to provide a simpler and easier experience.

1.1 Software Installation

1. Insert the disk on key into the PC.
2. Run the **eyecgas utility setup.exe** installation program.
3. Follow the installation instructions.



NOTE:

Minimal requirement for EyeCGas utility:

- Windows 7, service pack 1 and above. □
.Net Framework 4.5 and above. Windows
- 8.1 □ .Net Framework 4.5 and above,
Windows 10.

Connecting the EyeCGas® to the PC

1. Verify camera is turned on and recording is stopped.
2. Connect the camera to the PC with the supplied USB cable (See: EyeCGas User Manual, Figure 17).
3. Run the **EyeCGas Utility software** on the PC.



NOTE:

it is recommended to safely eject camera before disconnecting from PC

The "Searching for Camera" window is displayed.



Figure1 : Searching for Camera



NOTE:

If the EyeCGas® Utility software is already running, the following message is displayed:

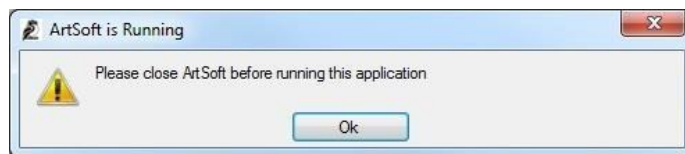


Figure2 : ArtSoft is Running Warning

When the camera and PC are paired, the Home screen is displayed, showing **Camera is Connected** status.



Figure3 : Home Screen

Transfer/Delete Files

1.2 Transfer Files from Camera to PC

The EyeCGas® camera contains an SD memory card which stores all recorded movies and meta data. To transfer files from the SD card to the PC use the following procedure:

1. Press the “Copy from camera to PC” button ([Figure 3](#)) to copy files from the camera to the PC.
2. Click the “Browse” button ([Fig 4](#)) to select the destination folder to store the files on the PC.

EyeCGas® Utility Software



NOTE:

Downloaded files are located in the default folder: C:\Users\Public\EyeCgas unless another location has been specified by the user.

3. Click “Start” to begin the download.

The utility starts downloading from camera to PC.

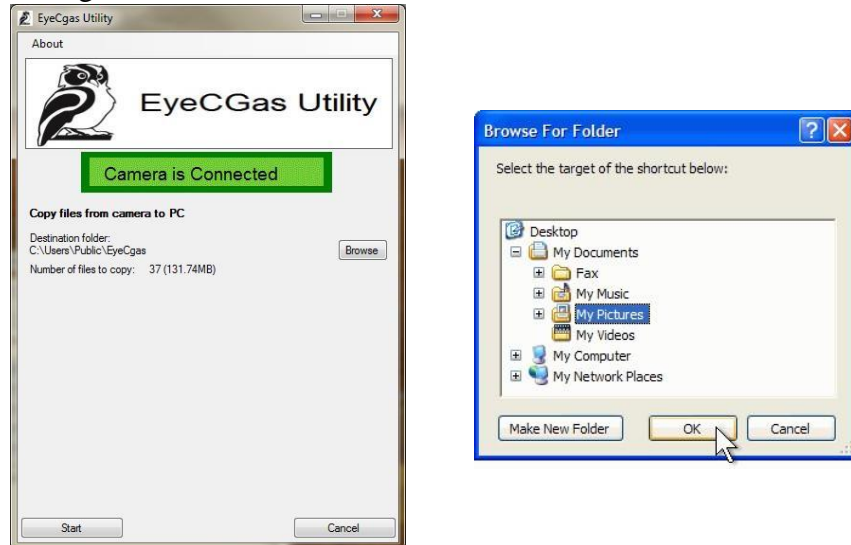


Figure4 : Select save location

- a. If the destination folder is “Missing Write Permission” and the following message is displayed, select a different save location.

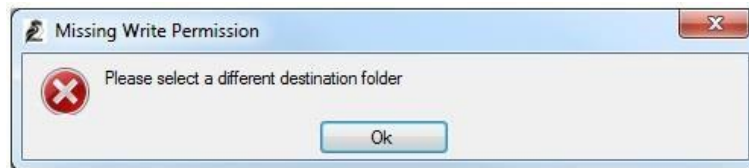


Figure5 : Missing Write Permission window

- b. If the “Low disk space” message is displayed, free up space on the computer’s hard drive or select another drive.

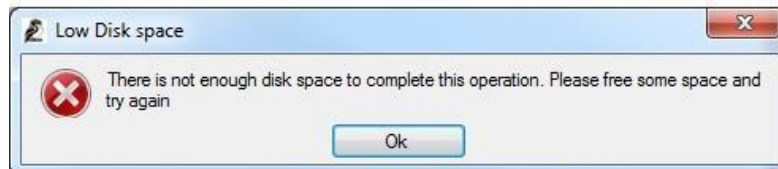


Figure6 : Low disk space notification

4. Once download has completed, press the “Goto folder” button to view the files.

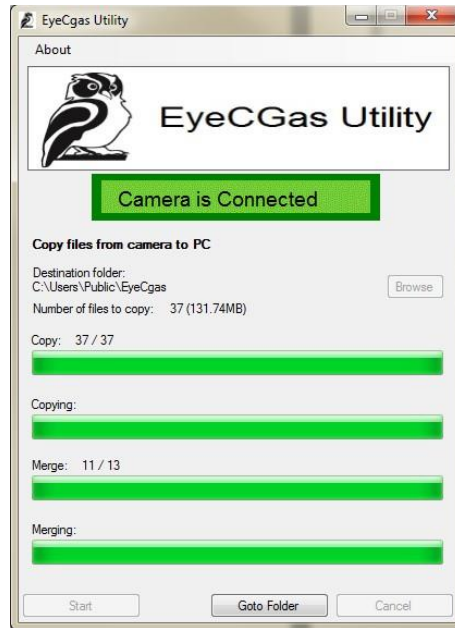


Figure7 : Download completed



NOTE:

EyeCGas utility automatically creates a JPG file for every mp4 movie.

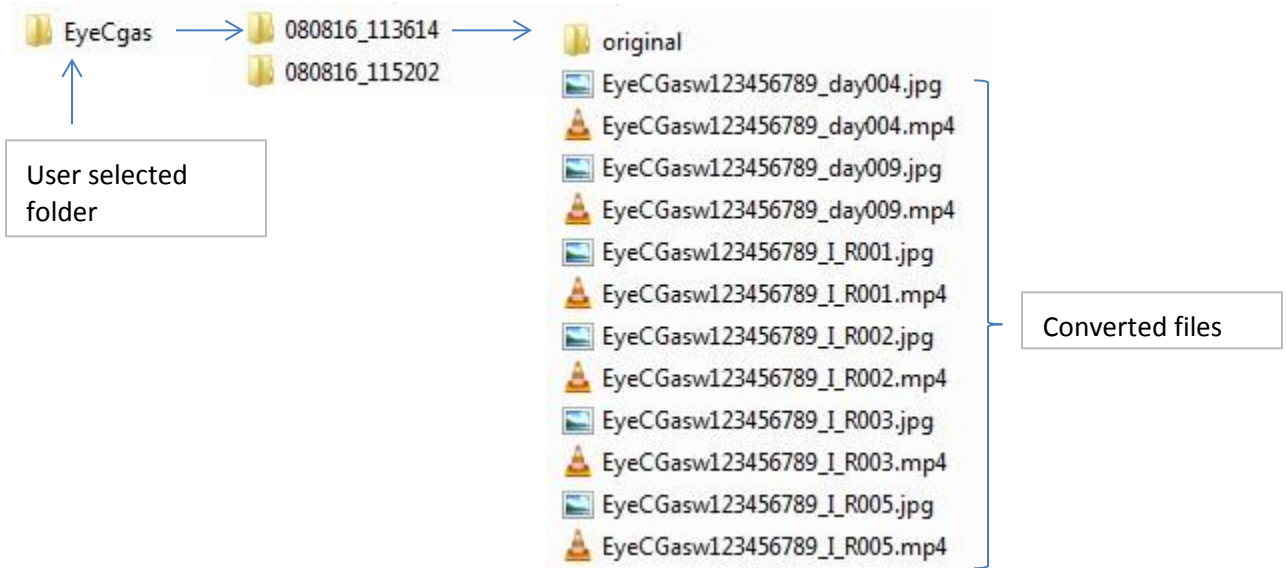
1.3 Directory

A downloaded file will be stored on PC as follows:

Folder with the current date and time will be created under the selected root directory for each download operation. Under this folder you will be find the generated videos and images downloaded from the EyeCGas camera.

Please note: source file can be found in the original folder if error is occurred during the download process and file was not created.

EyeCGas® Utility Software



1.4 Delete Data from Camera

1. Press the “Delete all data from camera” button to delete all data stored on the SD card.



NOTE:

A file is deleted permanently when performing this operation.

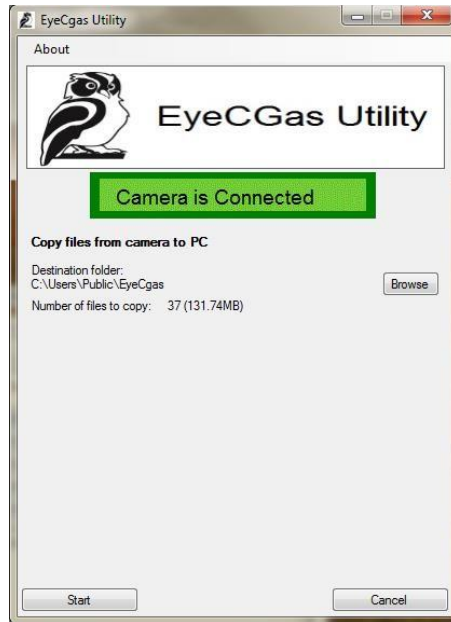


Figure8 : Delete all data of camera

2. Click “Yes” to confirm that you wish to delete all data from the camera’s SD card.

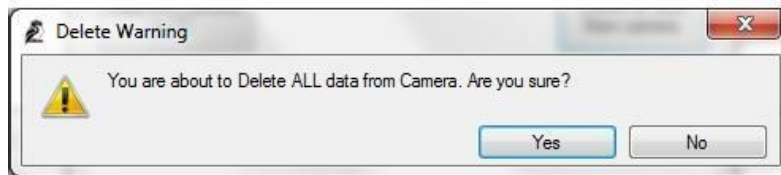


Figure9 : Confirm Camera Data Deletion



NOTE:

Supported players are VLC and Windows Media Player.

Settings Menu

1.5 Setting date and time

Date and time can be set on camera via the EyeCGas® utility.

Select DateTime on the setting menu in order to set the time and date on the target.

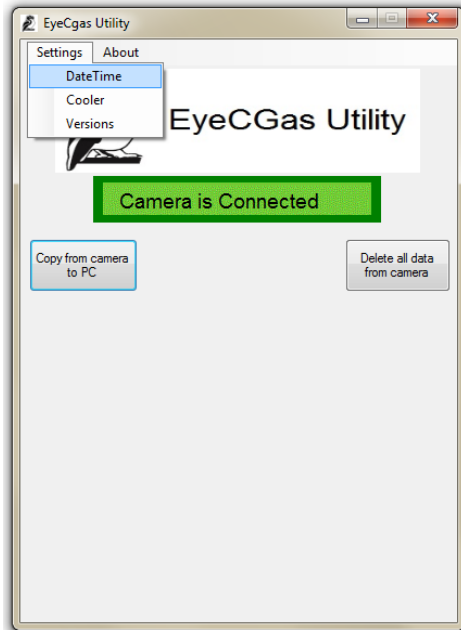


Figure10 : Settings menu

If DateTime was selected in the settings menu and the camera is connected and communicated over USB, you should receive the date and time settings window as showing in Figure 11. Click set after entering the correct time and date.

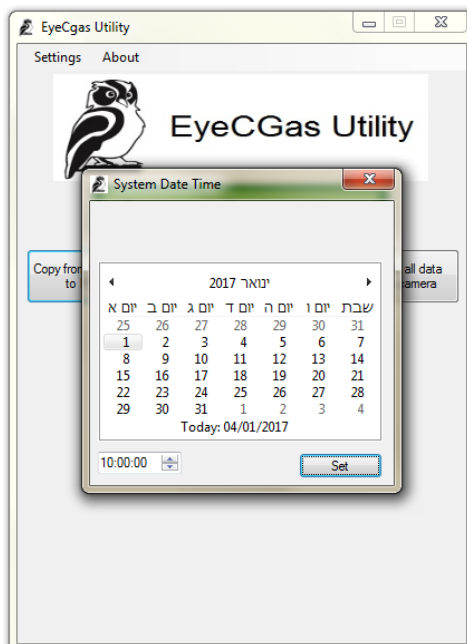


Figure11 : System Date Time window

1.6

Set cooler off

Select Cooler on the settings menu in order to turn cooler off.

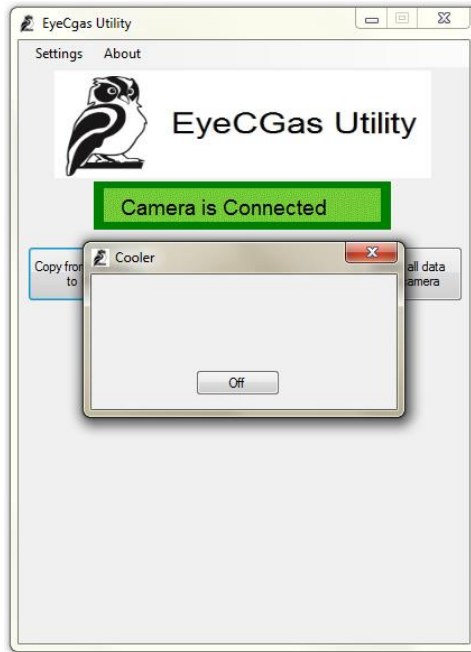


Figure12 : Cooler off window



NOTE:

Selecting the COOLER OFF button deactivates the cooler. This reduces noise and extends cooler and battery life.

1.7 System Versions

Select System Versions on the settings menu in order to receive the camera versions.

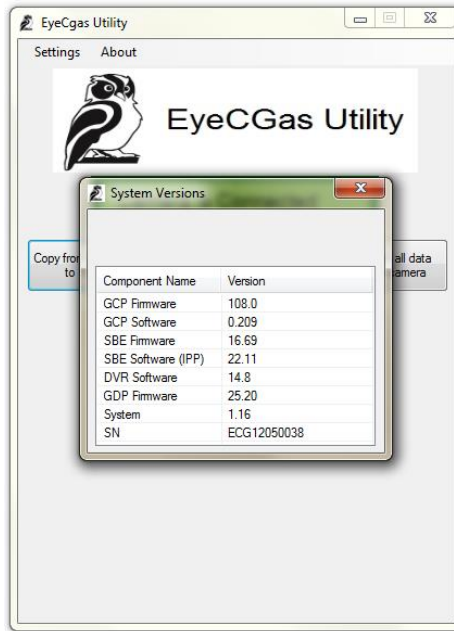


Figure13 : System Versions window